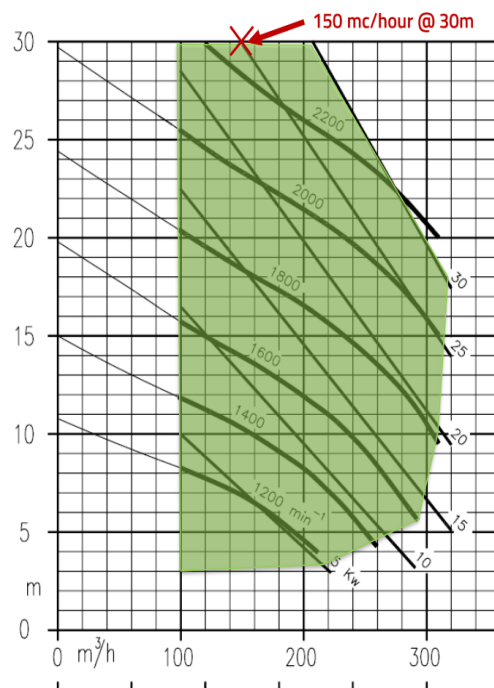
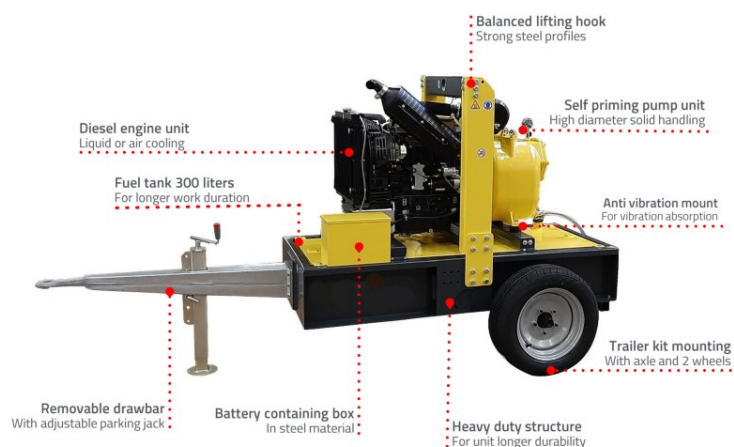


Groupe motopompe diesel tractable

EIP-150-3

HMT	Débit Motopompe
30 m	120 m ³ /h



Caractéristiques

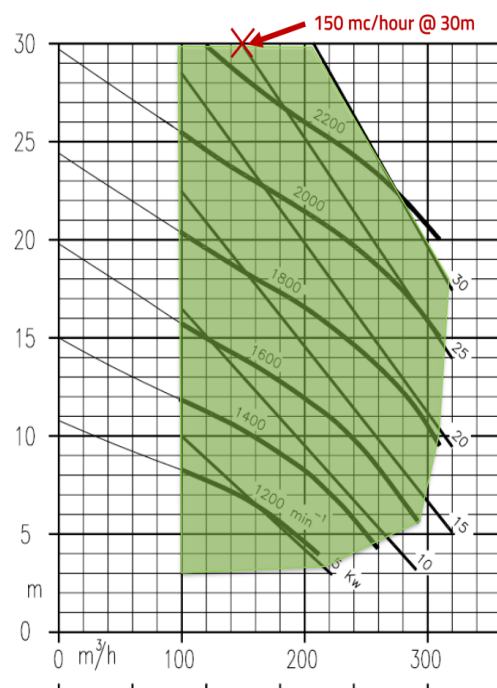
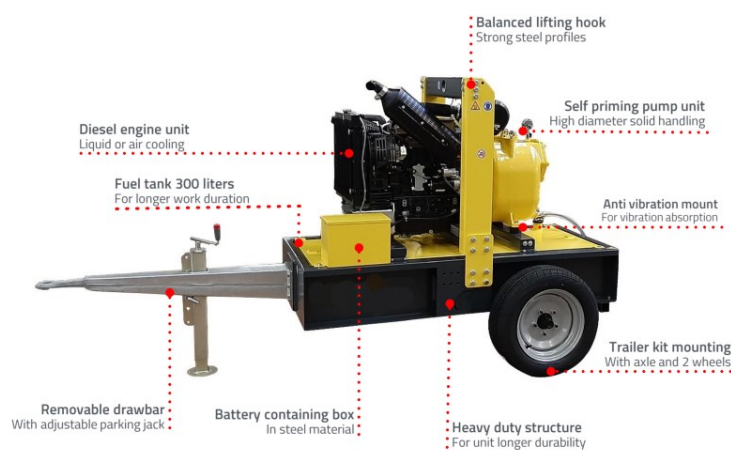
Pompe VICTOR	S150
Type	Autoamorçante
Débit	150 m ³ /h
HMT	30 m
Passage libre	72mm
Bride aspi / refoulement	DN100 / DN100
Corps de pompe	Fonte
Roue	Fonte

Moteur KOHLER	KDI 2504M
Type	4 cylindres
Carburant	Diesel
Vitesse	2200 rpm
Puissance	33kW (44CV)
Cylindrée	2504 cc
Refroidissement	Par air
Réservoir	100L

Diesel motor pump towable

EIP-150-3

HMT	Flow
30 m	150 m ³ /h



Caracteristics

VICTOR pump	S150
Type	Self-priming
Flow	150 m ³ /h
HMT	30 m
Free passage	72mm
Inlet / outlet	DN100 / DN100
Casing	Cast iron
Impeller	Cast iron

KOHLER engine	KDI 2504M
Type	4 cylinders
Fuel	Diesel
Speed	2200 rpm
Power	33kW (44CV)
Displacement	2504 cc
Cooling	Air
Tank	100L