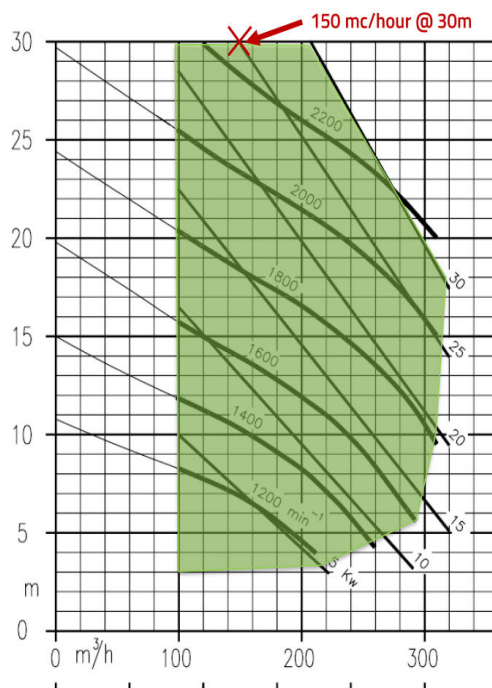
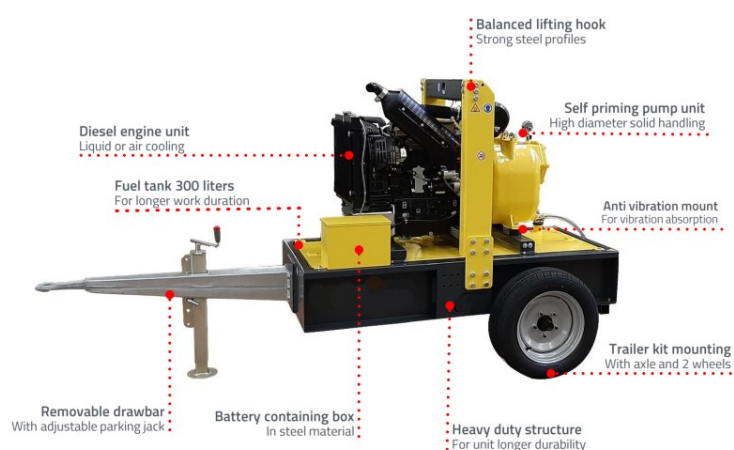


Groupe motopompe diesel tractable

EIP-150-3

HMT	Débit Motopompe
30 m	150 m ³ /h



Caractéristiques

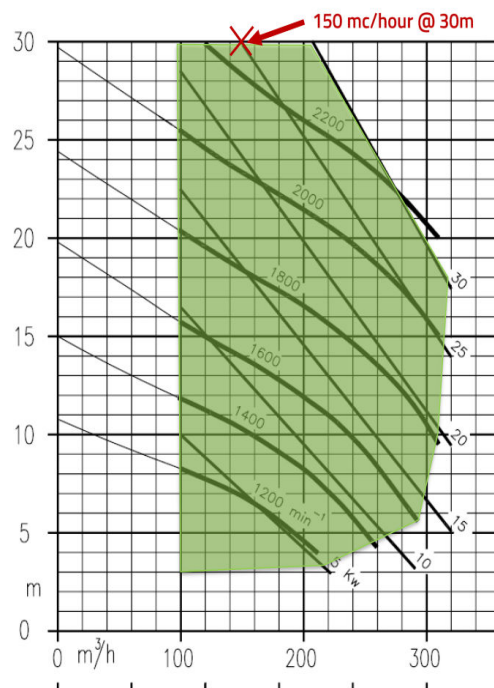
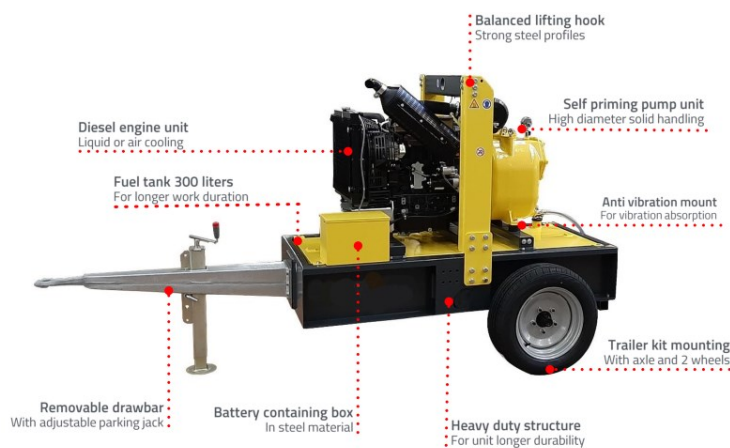
Pompe VICTOR	S163
Type	Autoamorçante
Débit	150 m ³ /h
HMT	30 m
Granulométrie	54mm
Bride aspi / refoulement	DN150 / DN150
Corps de pompe	Fonte
Roue	Fonte

Moteur DEUTZ	TD2.9 L4
Type	4 cylindres
Carburant	Diesel Stage V
Vitesse	2200 rpm
Puissance	55.4 kW (75.3CV)
Cylindrée	2900 cc
Refroidissement	Liquide
Réservoir	300L

Diesel motor pump towable

EIP-150-3

HMT	Flow
30 m	150 m ³ /h



Caracteristics

VICTOR pump	S163
Type	Self-priming
Flow	150 m ³ /h
HMT	30 m
Particle size	54mm
Inlet / outlet	DN150 / DN150
Casing	Cast iron
Impeller	Cast iron

DEUTZ engine	TD2.9 L4
Type	4 cylinders
Fuel	Diesel StageV
Speed	2200 rpm
Power	55.4kW (75.3CV)
Displacement	2900 cc
Cooling	Liquid
Tank	300L